

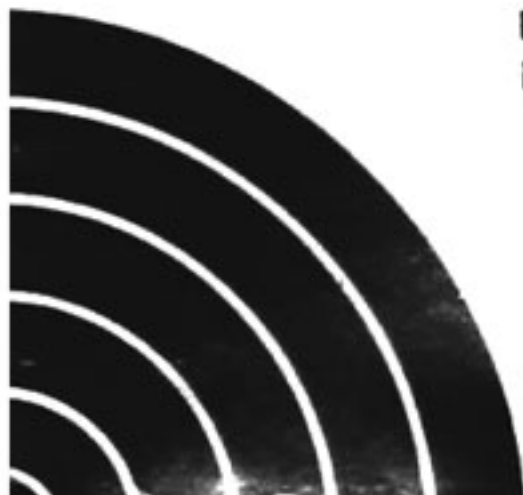
ortofon

accuracy in sound

Ortofons Dynamische Stereo Pick-up
Ortofon Moving Coil Cartridge
Ortofons Dynamisches Stereo
Tonabnehmer-System
Cellule à Bobine Mobile Stéréo Ortofon

MC 20 S

MC 30 S



Ortofon Moving Coil Cartridge

Thank you for choosing an Ortofon Moving Coil Cartridge for your turntable. Ortofon Moving Coil Cartridges are renowned the world over for their outstanding sound reproduction qualities. Before mounting your new cartridge, please read the following instructions carefully.

Mounting

1. Following the colour code (D), mount the leads on the cartridge's terminal pins (C). Never solder directly on the terminal pins.
White: left channel, signal (L).
Blue: left channel, ground (LG).
Red: right channel, signal (R).
Green: right channel, ground and shield (RG).
2. Fasten the cartridge (B) loosely in the headshell (A).
3. Adjust the space (E) from the diamond tip to the socket (F). (Consult the turntable/tonearm instructions).
4. Screw the cartridge tightly in the headshell and balance the tonearm. Set the tracking force and antiskating.
5. If the tonearm/headshell is not parallel with the record (G), the height of the tonearm should be adjusted, or spacers (H) should be inserted between the cartridge and headshell.
6. If the cartridge is not positioned horizontally when viewed from the front (I), turn the headshell carefully in the required direction. (Consult the turntable/tonearm instructions).

Connection to amplifier

The cartridge has an internal impedance of 3 ohm and output that is approximately 2.5 times higher than other moving coil models. This means that the cartridge can be connected directly to amplifiers that have a special built-in moving coil (MC) preamplifier. This is done by plugging the turntable cables directly into the MC or PHONO input on the back of the amplifier.

The cartridge can also, of course, be used together with Ortofon's step-up transformers or pre-preamplifiers.

Stylus Care

To maintain optimal sound reproduction and to prevent damage to your records, we recommend that your cartridge be inspected at regular intervals, and at least once a year, at your Ortofon dealer.

Remember to remove dust from the stylus tip before and after each playback using a suitable small brush, which should be guided carefully along the cantilever in the direction of the stylus tip. If you use a fluid cleaner, we recommend that you first remove the cartridge from the tonearm. Clean with the cartridge's terminal pins facing upwards and cantilever downwards, thus preventing fluid from seeping into the body and damaging the internal components.

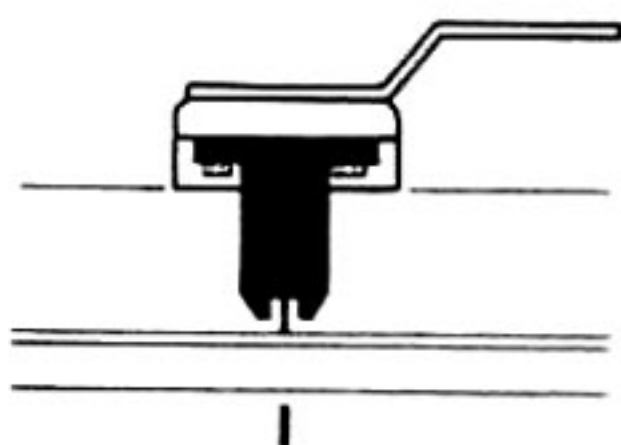
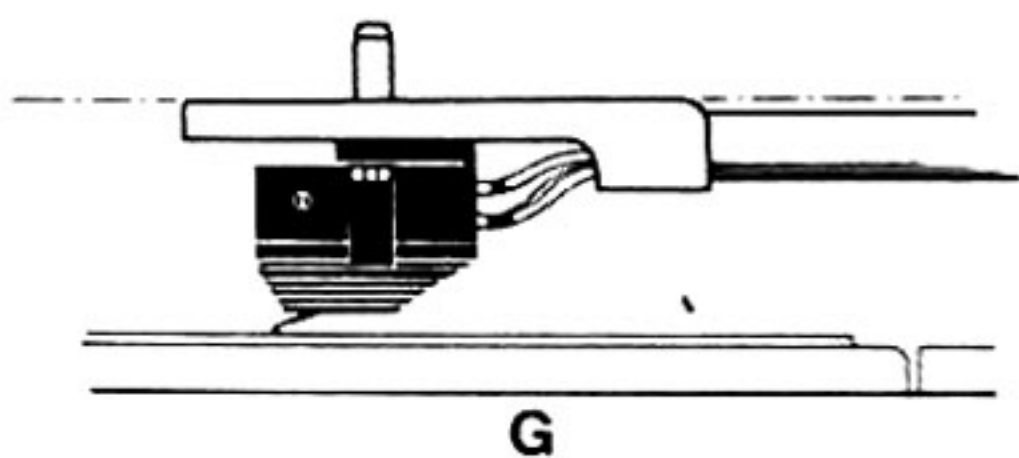
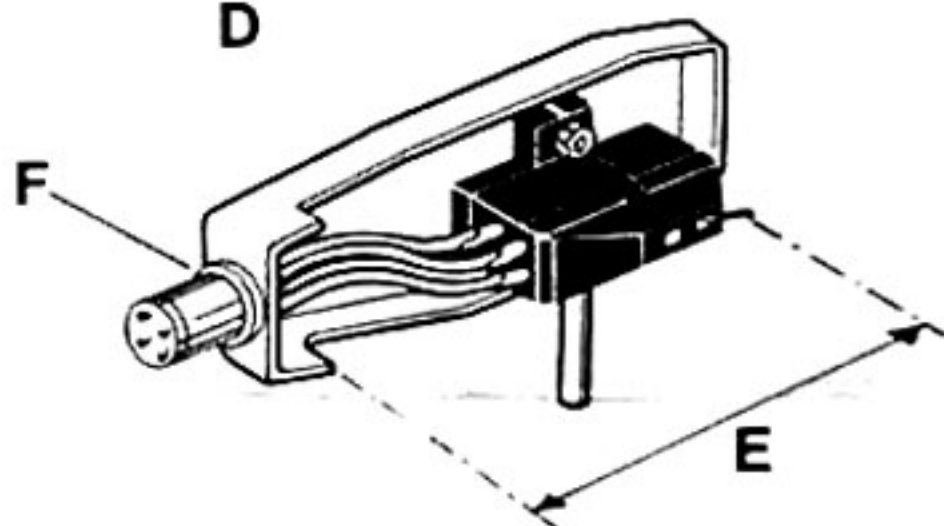
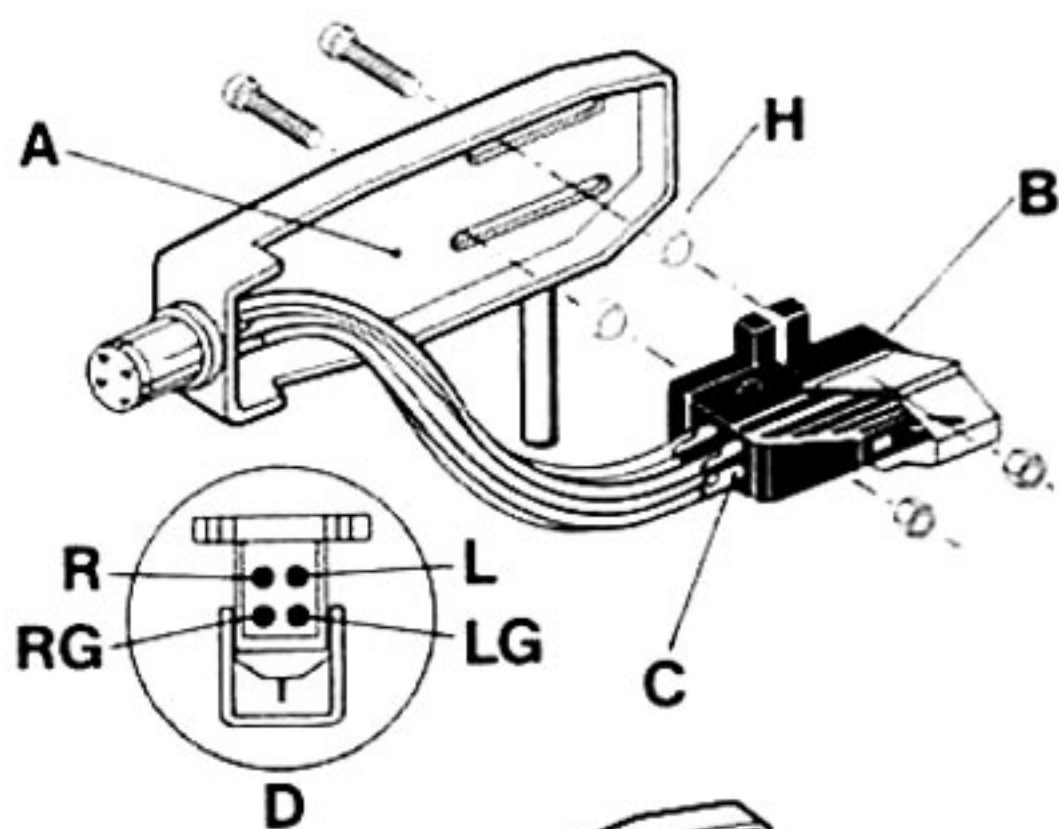
Ortofon's Exchange Service

Owing to the nature of the design of the Ortofon moving coil cartridges, the stylus is not part of a replaceable assembly and therefore Ortofon offers, through its dealers, an exchange/repair service. If you should have need for this service please contact your local Ortofon dealer.

Important

Never attempt to open the cartridge as this will snap the electrical connections.

Remove the stylus guard with a gentle tug in a direction parallel to the record surface.



	MC 20 S	MC 30 S
Weight	9 g	9 g
Type of stylus	vdH II ⁺ Nude	F.G. I Nude
Equivalent stylus tip mass	0.40 mg	0.33 mg
Frequency response	20–40.000 Hz + 4 dB – 1 dB	20–40.000 Hz + 4 dB – 1 dB
Output voltage at 1000 Hz per 5 cm/sec.	> 0.2 mV	> 0.2 mV
Channel separation at 1000 Hz	> 25 dB	> 25 dB
Channel balance at 1000 Hz	< 1 dB	< 1 dB
Compliance dynamic, vertical	15 $\mu\text{m} / \text{mN}$	16 $\mu\text{m} / \text{mN}$
Compliance dynamic, lateral (10 Hz)	15 $\mu\text{m} / \text{mN}$	16 $\mu\text{m} / \text{mN}$
Recommended tracking force	1.8 g	1.8 g
Tracking force range	1.6 – 2.0 g	1.6 – 2.0 g
Tracking ability at 315 Hz lateral	> 80 μm	90 μm
Vertical tracking angle	20°	20°
FIM distortion	$\leq 0.8\%$	$\leq 0.8\%$

F.G. = Fritz Gyger

vdH = van den Hul