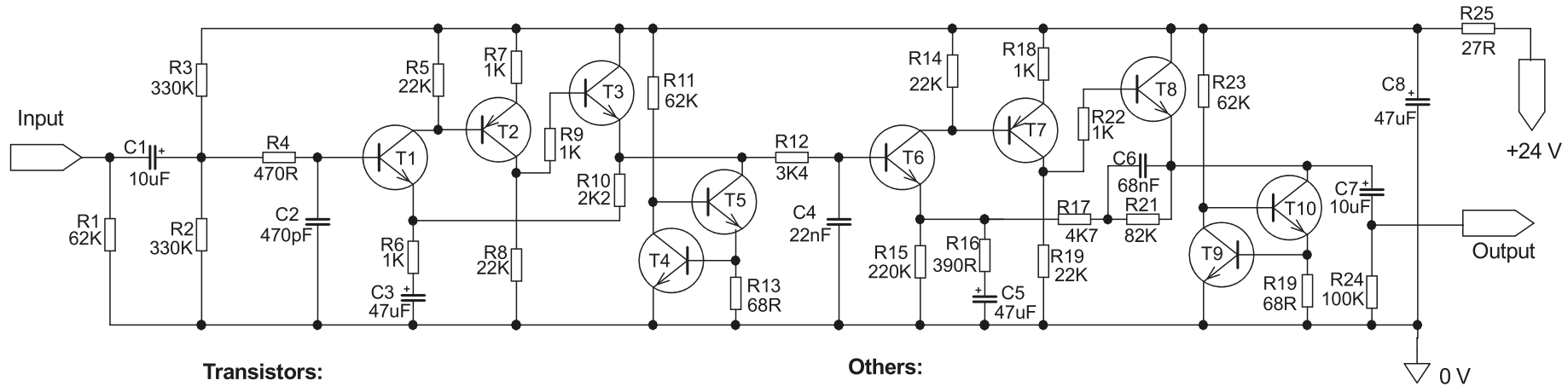


# NAIM NA 322/4 MM phono board



## Transistors:

T1, 3, 4, 5, 6, 8, 9, 10: ZTX 834 or BC 550C

T2, T7: ZTX 214 or BC 560C

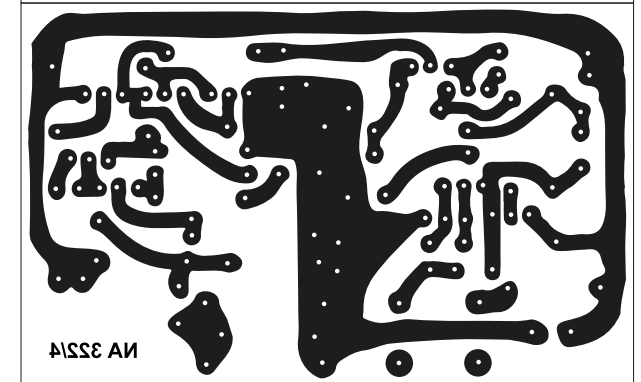
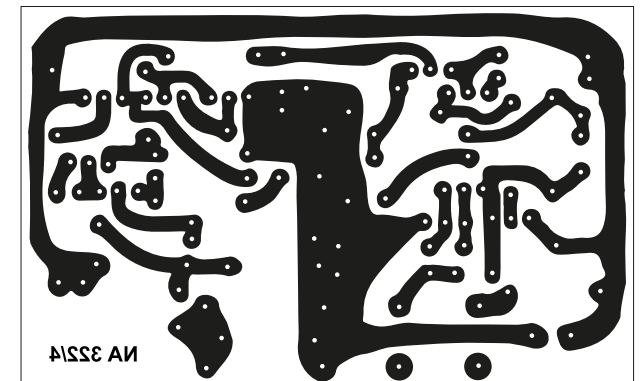
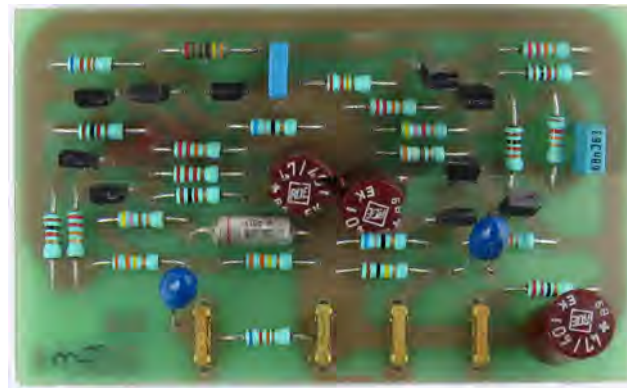
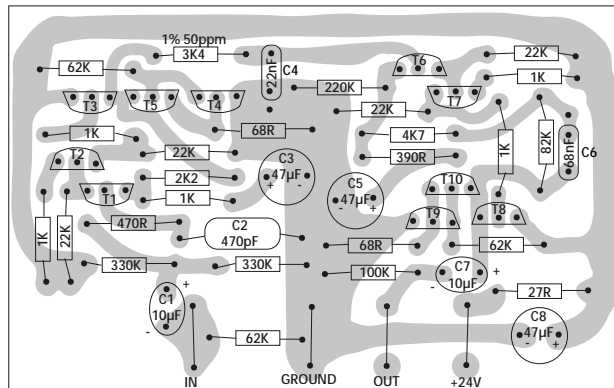
## Others:

C1, C7: Tantalum 35V

C3, C5, C8: Electrolytic 40V

C2: Styroflex

R12: 1% 50ppm



## Important:

Layout uses ZTX 834 and ZTX 214.

BC 550C and BC 560C have reversed pinout.

So just put them in reversed!

Updated: January 4, 2019

Schematic and PCB layout drawn by Matthias Stockert

mirrored layout for printing  
(81 mm x 51 mm)